

the PROFILE



Published Monthly by the Harrisburg Section

Our President's Message



I hope that all Section Members enjoyed a safe, happy and relaxing summer. After summer of almost continual rain and the beginning of football season we are about to embark on a new year of Section Meetings, social functions, charity events and camaraderie with fellow Section Members.

I am extremely honored to be serving as the 45th President of the Harrisburg Section of the American Society of Highway Engineers. I would like to thank the Board of Directors and the Members-at-large for giving me the opportunity to serve as President of this distinguish organization, which is one of the finest and most active organizations in Central Pennsylvania. I pledge to work with the Board of Directors,

as well as the Membership-at-large to maintain the extraordinary tradition of cooperation and camaraderie which has made the Harrisburg Section the best (bias opinion) Section in the American Society of Highway Engineers organization.

The list of the 44 Past Presidents is a virtual Who's/Who's of the Highway/Transportation Industry of the Central Penn Area. Bob Keller, Charlie Whisler, Dixon Earley, Dave Sims, Bill Pickering, Bob Slovinac, Al Lyng, and Ben Rocuskie are Past Presidents who had a significant influence on my professional development at PennDOT. Past Presidents Brian McCoola, Bob Peda, Ray Britcher, and Jack Diviney were very influential in getting me involved with ASHE. I had the honor and pleasure of serving on the Board of Directors for five years under the leadership of Past Presidents Ron Soder, Sandi Loy-Bell, Mike Bougher, John Derr, and Drew Bitner and I learned a lot from their leadership and guidance.

This Issue Sponsored By:

Greenhorne & O'Mara, Inc.

Skelly & Loy, Inc.

GTS Technologies, Inc.

Urban Engineers, Inc.

After many years of being host to our Monthly Dinner Meetings Harding's Restaurant closed their doors and went out of business. Jill Thompson and Drew Bitner did an excellent job of scouting locations in the Harrisburg area, both East and West Shores, to find a new site for our Dinner Meetings. The Board decided to hold the Dinner Meetings for the 2003/2004 Year at the Radisson Penn Harris Hotel & Convention Center, 1150 Camp Hill Bypass, Camp Hill. The Meetings will be held in the Governor B Room.

The price of each dinner at the Radisson will cost the Section \$17.00. The

See "President", on next page

(Detach and return by Wednesday, October 1, 2003)

Speaker: Representative Ronald S. Marsico
Program: Transportation Funding

I will be attending the October 6th meeting at the Radisson Penn Harris Hotel and Convention Center.

Name _____ Firm _____

Guest Name _____ Guest Firm _____

Contact: Andrea Hartman, Greenhorne & O'Mara, Inc. ▪ Phone: 717-691-3355 ▪ Fax: 717-691-3366 ▪ RSVP: 4:00pm, Wednesday, October 1.

Guests are Welcome!

Times: 5:30 - Social Hour ▪ Cash Bar ▪ 6:30 - Dinner ▪ 7:30 - Program ▪ Price: \$15 Per Person

Dinner Reservations: The entree for the evening will be London Broil, with Caesar Salad. A vegetarian meal will be available upon request. Please note that ASHE is charged for all reservations. It is possible to cancel your reservations up to 9:00 am, Monday October 6th by calling Andrea Hartman at Greenhorne & O'Mara, Inc.

Note: - All members who have made reservations for dinner but do not show up will be charged for dinner.

Harrisburg Section Officers

PRESIDENT

Charles W. Allwein, P.E.

INTERMEDIATE PAST PRESIDENT

Drew Bitner, P.E., P.L.S.

FIRST VICE PRESIDENT

Michael Perloski, P.E.

SECOND VICE PRESIDENT

Douglas J. George, P.E.

SECRETARY

Todd Morris, P.E.

TREASURER

Dale B. Mellott, P.E., P.L.S.

PROFILE EDITOR

David Kapura, E.I.T.

NATIONAL DIRECTOR

Robert M. Peda, P.E.

DIRECTOR - 1 YEAR

Kevin McCullough, E.I.T.

Kathy Weiser

Jill Thompson

DIRECTOR - 2 YEARS

Catharine Miller, E.I.T.

Mark Greenholt, P.E.

Steven Koser, P.E.

DIRECTOR - 3 YEARS

Michael M. Ryan, P.E.

Brian M. Fraley

David Kapura, E.I.T.

ALTOONA REGIONAL DIRECTOR

Steve Roman, P.E.

ASHE Standing Committees

Program

Mike Perloski

Jill Thompson

Dave Kapura

Student Development

Steve Roman

Audit

Kevin McCullough

Steve Koser

Scholarship

Doug George

Legislative Report

Brian Fraley

Budget

Drew Bitner

Membership

Mark Greenholt

Brian Fraley

Public Relations

Kathy Weiser

Adopt a Highway

Jill Thompson

Regional Representative

Bob Peda

Member of the Year

Drew Bitner

Technical

Kevin McCullough

Mike Ryan

Nominating

Drew Bitner

Website

Catharine Miller

Profile

Dave Kapura

Erin O'Brien

Charity Events

Kathy Weiser

Mike Ryan

Engineers Week

Jeffrey Bergsten

Becky Mease Doble

Newsletter

Dave Kapura, Editor

5000 Ritter Rd., Suite 102

Mechanicsburg, PA 17055

Work - (717) 691-3355

Find Us At:

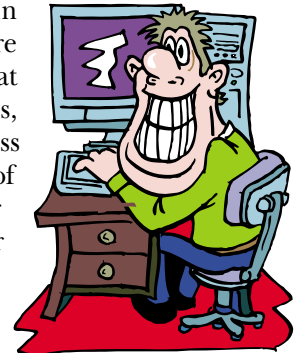
Local: www.asheharrisburg.org

National: www.highwayengineers.org

President, Continued from previous page.

Board decided to keep the costs for members and guests at \$15.00 per person. The Section will absorb the extra cost of \$2.00 per person. We are able to subsidize the dinner costs because of the continued tremendous support of our Century Club Members and the cost savings resulting from using E-mail to deliver the "Profile".

The Section Board decided last year that we would begin sending the "Profile" electronically this year. Notices were included in previous issues of the "Profile". Please ensure that the E-mail Directory Committee listed below or Lisa Evans, levans@evanseng.com, is notified if your E-mail address changes. If you hear that someone did not receive a copy of this "Profile" please ask them to check to see if we have their current E-mail address. We will continue to send a paper copy to those Members who do not have access to E-mail.



My Goals for the upcoming year are:

- **Maintain our Membership**

- Maintain the great membership support from the Consultant Community

- Increase the membership from PennDOT, FHWA and the Pennsylvania Turnpike Commission

- **Maintain involvement with the community and various charities**

- **Continue to improve our activities to encourage membership involvement**

- Technical Sessions

- Social Functions

- Emphasis on young members activities

- **Partner with ASCE, PSPE and other engineering organizations to continue the development of an Outreach Program to encourage interest in engineering as a career.**

Our Annual Golf Outing Held on August 1, 2003 was a grand success. 180 Golfers participated in this event. The proceeds of this event will go towards our Scholarship Fund. The Section should be able to award at least five \$1500 Scholarships to students interested in pursuing a career in engineering.

The annual ASHE/ASCE/PSPE was held at the Lower Allen Township Barn on September 12, 2003. Approximately 110 people attended this event. Everyone enjoyed good food, drinks, and "Monte Carlo" gambling with play money. Thanks to all members who helped to make this night a success and the sponsors who supplied gifts used for prizes.

AD Hoc Committees

Historian

Mark Greenholt

Erin O'Brien

Brian Fraley

Steve Koser

ASHE/PSPE/ASCE Picnic

Mike Perloski

Drew Bitner

Annual Golf Outing

Drew Bitner

Doug George

Contractor & Government Involvement

Brian Fraley

Steve Koser

October's Charity of the Month: FOOD BANK

Please bring canned goods or monetary donations to the October 6th dinner meeting.

Thank You for your support.

For more information, contact
Kathy Weiser at 540-6040 or
kmweiser@mccormicktaylor.com

Speaker and Program

The October 6th, 2003 dinner meeting guest speaker will be Chairman of the House Transportation Committee's Subcommittee on Highways, Representative Ronald S. Marsico, speaking about Transportation Funding.

Representative Marsico was first elected to the Pennsylvania House of Representatives in 1998. During his tenure, Rep. Marsico has written nine bills that have become law.

To make highways safer, Rep. Marsico led the successful effort to increase the size of the Pennsylvania State Police force, so more officers will be available to patrol the state's highways and communities. He also authored a law that addressed truck-related highway safety issues by creating a Motor Carrier Safety Advisory Committee and increasing the fines against truckers who keep false duty logs. Rep. Marsico has helped bring millions of dollars in new state funding for better and safer roads and bridges, and to reduce traffic congestion. He succeeded in securing funding for noise barriers to enhance the quality of life for people along Interstate 81. He is also a founding member of the Capital Beltway Advisory Committee; serves on the coordinating committee for the Harrisburg Area Transportation Study (HATS), Liquor Control, Tourism and Recreational Development, Veteran Affairs, and the Emergency Preparedness Committees.

A lifelong resident of Dauphin County, Rep. Marsico is a graduate of Bishop McDevitt High School and Ohio State University. He and his wife Elaine, have two children, Kelly and Wayde, and three grandchildren.

District 8-0 Anticipated September '03 - October '03 Lettings

County	State Route	Section	Title	CMS/ECMS #	Programmed Cost	Let Date
Cumberland	2035	RRX	18th Street		\$22,000	9/1/2003
Lebanon	1022	001	SR 1022 Swatara Crk Bridge	088145	\$2,322,000	9/4/2003
Lebanon	422	010	US 422	63795	\$1,919,000	9/4/2003
Perry	74	024	PA 74	61625	\$1,061,000	9/4/2003
York	238	006	Church/Greenbriar Rd	50683	\$414,000	9/4/2003
York	238	005	Stillmeadow Road Signal	49053	\$276,000	9/4/2003
Franklin	3006	RRX	Milnor Road		\$75,000	9/8/2003
Cumberland	0	ENH	CVRT Fogelsanger-Oakville		\$953,000	9/15/2003
Adams	394	002	Shrivers Corner Br	18095	\$419,000	9/18/2003
Dauphin	422	009	Derry Township Signals	085354	\$2,000,000	9/18/2003
Adams		ENH	Gettysburg Boro Walkway		\$304,000	10/1/2003
Adams	2008		Edgegrove Rd & Church St	61532	\$1,492,000	10/2/2003
Cumberland		RRX	Tenth Street		\$22,000	10/2/2003
Dauphin	3020	001	Union Deposit Road Bridge	085186	\$2,820,000	10/2/2003
Dauphin		LIN	District 8-0 2004 Line Painting	080047	\$518,000	10/2/2003
Lebanon	501	011	College St @ Richland Ave	65645	\$450,000	10/2/2003
York	1009	004	Pines Rd Bridge Rehab	61929	\$629,000	10/2/2003
Adams	97	001	Baltimore Pike I	50549	\$2,320,000	10/16/2003
Dauphin	3014	004	State St/Parkway Signal	62690	\$121,000	10/16/2003
Franklin		RRX	Orchard Drive		\$25,000	10/16/2003
Lebanon	4002	001	Center St. Bridge	088084	\$2,843,000	10/16/2003
Lancaster	222	023	Lititz/Oregon Pk Maint	63801	\$830,000	10/30/2003

NEW ASHE MEMBERS

NAME

Mark T. Czajkowski

Eileen P. Boyd

Shannon N. Miller

Paul J. Navarro

Jon A. Seitz

SPONSOR

Thomas Paul

Kathy Weiser

Doug George

John Derr

Todd Morris

MEMBERSHIP STATUS

Associate Member

Associate Member

Associate Member

Senior Member

Senior Member





ANNOUNCING ...

John A. Buchheit, P.E., has been named a vice president at Gannett Fleming, an international consulting engineering and construction management firm. Buchheit is a senior project manager in the firm's corporate office in Harrisburg, Pa. He is responsible for contract administration, marketing, and technical supervision of highway and bridge design.

As Gannett Fleming's bridge practice manager, he is also responsible for leading and directing the national development of bridge engineering across the entire corporation. He guides the bridge operations for more than 50 regional offices, assures quality compliance, and develops standard operating procedures for 105 bridge engineers and technicians.

John A. Derr, P.E., was recently named a vice president at Gannett Fleming, an international consulting engineering and construction management firm. Based in the firm's corporate office in Harrisburg, Pa., Derr serves as the firm's national highway practice manager and a project manager.

As the national highway practice manager, Derr is responsible for ensuring the practice performs consistently and participates actively in all market assessments and execution plans. As a project manager, he oversees preliminary engineering, environmental studies, and the final design of highways and related civil works projects.

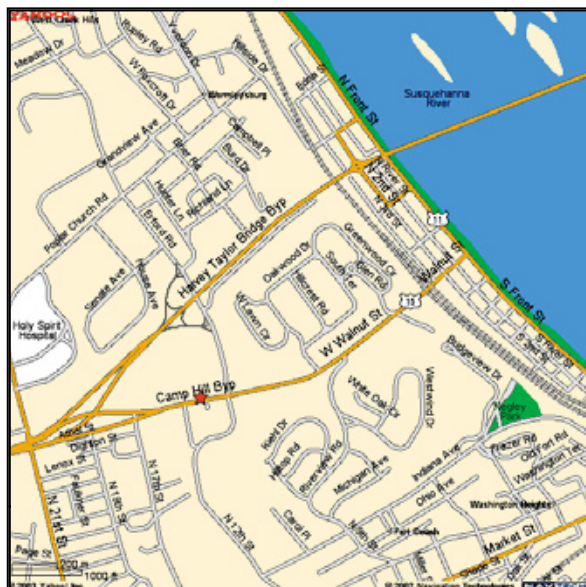
Harvey S. Knauer, P.E., P.L.S., was recently named a vice president of Environmental Acoustics Inc. (EAI), a Harrisburg, Pa.-based company that provides services associated with transportation and community noise and air quality.

Knauer's primary responsibilities focus on all phases of acoustical and air quality analyses related to transportation, industrial/commercial, and community noise and air quality projects. This includes noise monitoring, noise and air quality impact and mitigation analyses, construction noise and air quality evaluations, noise barrier design, and related training activities.

New Dinner Meeting Location

After many years of being host to our Monthly Dinner Meetings Harding's Restaurant closed their doors and went out of business. The Board decided to hold the Dinner Meetings for the 2003/2004 Year at the Radisson Penn Harris Hotel & Convention Center, 1150 Camp Hill Bypass, Camp Hill. The Meetings will be held in the Governor B Room.

Please contact Andrea Hartman at 691-3355 if you need further assistance.



ASHE Harrisburg Section 2003 Photo Contest



Harry Foltz, Kathy Weiser, Rodney Keefer, and Keith Markel

ASHE Harrisburg Section 2003 Scholarship Winners



UPCOMING MEETINGS AND EVENTS - ASHE ALTOONA

- Oct. 14 Adopt-A-Highway Trash Cleanup
- Oct. 15 Dinner at Anthony's, Johnstown
- Dec. 3 Dinner at Creekside Inn
- Jan. 21 Dinner at Anthony's, Johnstown
- Feb. 18 Dinner at U.S. Hotel, Holidaysburg
- Mar. 17 Dinner at Anthony's, Johnstown
- April Awards Banquet (TBA)

5th Annual ASHE Golf Outing

The 5th Annual ASHE Golf Outing was once again a huge success and a true testament to the strength of our membership. Honey Run and Hawk Lake provided another fantastic venue for the event on August 1, 2003. There were 120 golfers at Honey Run and 60 golfers at Hawk Lake for the 8:30 AM Shotgun Start.

The Hole Sponsors this year were:

GOLD

Urban Engineers, Inc.
C.S. Davidson, Inc.
Skelly & Loy, Inc.
McCormick-Taylor & Assoc.
Rummel, Klepper & Kahl, LLP
The RBA Group.
Michael Baker, Jr., Inc.
Gannett Fleming, Inc.
Valley Quarries, Inc.
Traffic Planning and Design, Inc.

SILVER

Hempt Bros., Inc.
C.C. Johnson & Malhotra, PC
KCI Technologies, Inc.
Greenhorne & O'Mara, Inc.

BRONZE

Mackin Engineering Co.
Site-Blauvelt Engineers
PA Asphalt Pavement Assoc.
Modjeski and Masters, Inc.
ACPA, Northeast Chapter
DMJM + Harris
Dawood Engineering, Inc.
T.W. Consultants, Inc.
Pennoni Associates, Inc.

Many thanks to the Hole Sponsors, for their support of the ASHE Scholarship Fund. Last year the Harrisburg Section awarded five (5) \$1,500 scholarships, thanks to the Hole Sponsors at the Golf outing. This year we should be awarding six (6) \$1,500 scholarships. The sponsors contributed almost \$5,000 to the scholarship fund, and as a result of the endeavors of Judy Hricak and Andrea Santa (the Beer and Soda Girls) selling Mullegans resulted in more than \$900 raised for the Scholarship Fund. Thank you Judy and Andrea, and an extra thank you to Betsy McDonald and Gannett Fleming for making the sponsor signs.

Prizes were awarded to the best 5 teams at Honey Run and the best 3 teams at Hawk Lake, and 10 individual prizes were awarded for the Closest to the Pin, Longest and Straightest Drives. But the real winners are the six (6) future engineering students who will be awarded \$1,500 scholarships in May 2004. Next year we would like to match or exceed this year and shoot for at least six (6) \$1,500 scholarships. The professionals at Honey Run and Hawk Lake have agreed to the "Let's Make a Deal" in January for next years' "6th Annual ASHE Golf Outing" on August 6, 2003. Mark your calendars now!

THE ASHE CENTURY CLUB

The ASHE Harrisburg Section wishes to thank the following Century Club members for their support during 2003-2004.

- ◆ alfred benesch and company
- ◆ American Concrete Pavement Association
- ◆ Ammann & Whitney
- ◆ Associated Pennsylvania Constructors
- ◆ Michael Baker, Jr., Inc.
- ◆ Benatec Associates
- ◆ Buchart-Horn, Inc.
- ◆ Capuano Engineers, Inc.
- ◆ C.C. Johnson & Malhotra, P.C.
- ◆ CGH Pavement Engineering, Inc.
- ◆ C.S. Davidson, Inc.
- ◆ Dawood Engineering, Inc.
- ◆ Dewberry-Goodkind, Inc.
- ◆ DMJM + Harris
- ◆ Erdman Anthony Associates
- ◆ Evans Engineering, Inc.
- ◆ Gannett Fleming, Inc.
- ◆ Greenhorne & O'Mara, Inc.
- ◆ GTS Technologies, Inc.
- ◆ Hempt Bros., Inc.
- ◆ Herbert, Rowland & Grubic, Inc.
- ◆ Johnson Mirmiran & Thompson, Inc.
- ◆ KCI Technologies, Inc.
- ◆ Keller Engineers, Inc.
- ◆ Mackin Engineering Company
- ◆ McCormick, Taylor & Associates, Inc.
- ◆ Midstate Consultants, Inc.
- ◆ Modjeski and Masters, Inc.
- ◆ Orth-Rodgers & Associates, Inc.
- ◆ Pennoni Associates, Inc.
- ◆ Pennsylvania Asphalt Pavement Association
- ◆ Pinto Engineering, Inc.
- ◆ The RBA Group
- ◆ Rettew Associates, Inc.
- ◆ Rummel, Klepper & Kahl, LLP
- ◆ Skelly & Loy, Inc.
- ◆ Susquehanna Valley Construction Corporation
- ◆ Traffic Planning and Design, Inc.
- ◆ T.W. Consultants, Incorporated
- ◆ Urban Engineers, Inc.
- ◆ URS Corporation
- ◆ Valley Quarries, Inc.
- ◆ Whitney Bailey Cox & Magnani, LLC

The Century Club is comprised of ASHE members who have made a \$100 pledge to support the ASHE Harrisburg Sector's activities. Century Club Members are prominently displayed in The Profile up to ten times a year. The Profile is issued monthly to more than 400 Section Members in South Central Pennsylvania. The Profile is also distributed to the Pennsylvania Department of Transportation's Central Office.

The Century Club is an excellent opportunity to gain recognition among your colleagues, while actively supporting ASHE.
Call Lisa Evans of Evans Engineering, Inc. at 717-541-1580 to make your pledge.