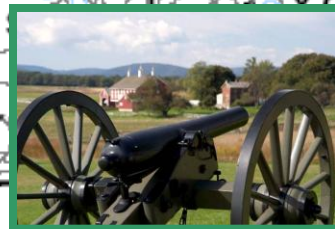
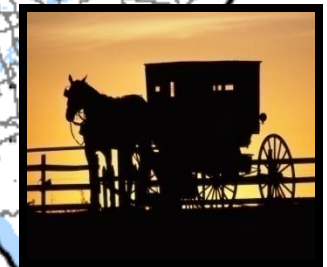
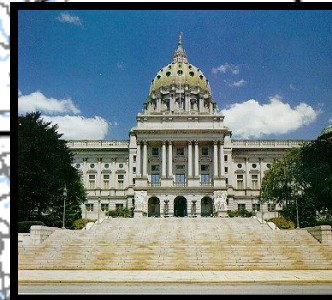


DISTRICT 8 ASHE PRESENTATION

APRIL 7, 2009



District 8 Bridge Overview

- Bridge Profile
- 2008 Letting Results
- 2009 Letting Goals
- Accelerated Bridge Program
- Bridge Preservation
- Department Force Program
- Bridge Inspections

State Bridge Profile (8-0)

- 3419 state bridges
- Deck Area 14,016,424 SF
- 17.92% SD deck area
- 20.03% FO deck area
- SD bridges 716
- SD bridges built before 1960- 619
- 72 posted
- 6 closed

2008 Letting Results

- Planned 54 Bridges for \$72 million
- Bid 62 Bridges for \$83 million.
 - 18 Replacements
 - 21 Rehabilitations
 - 18 Preservations
 - 2 Removals
 - 1 New
 - 1 Emergency

2009 Letting Goals

- Preservation: 20 bridges-26.2M
- Rehabilitation: 39 bridges-90.9M
- Replacement: 28 bridges-38.9M
- Total: 87 bridges-156.0M

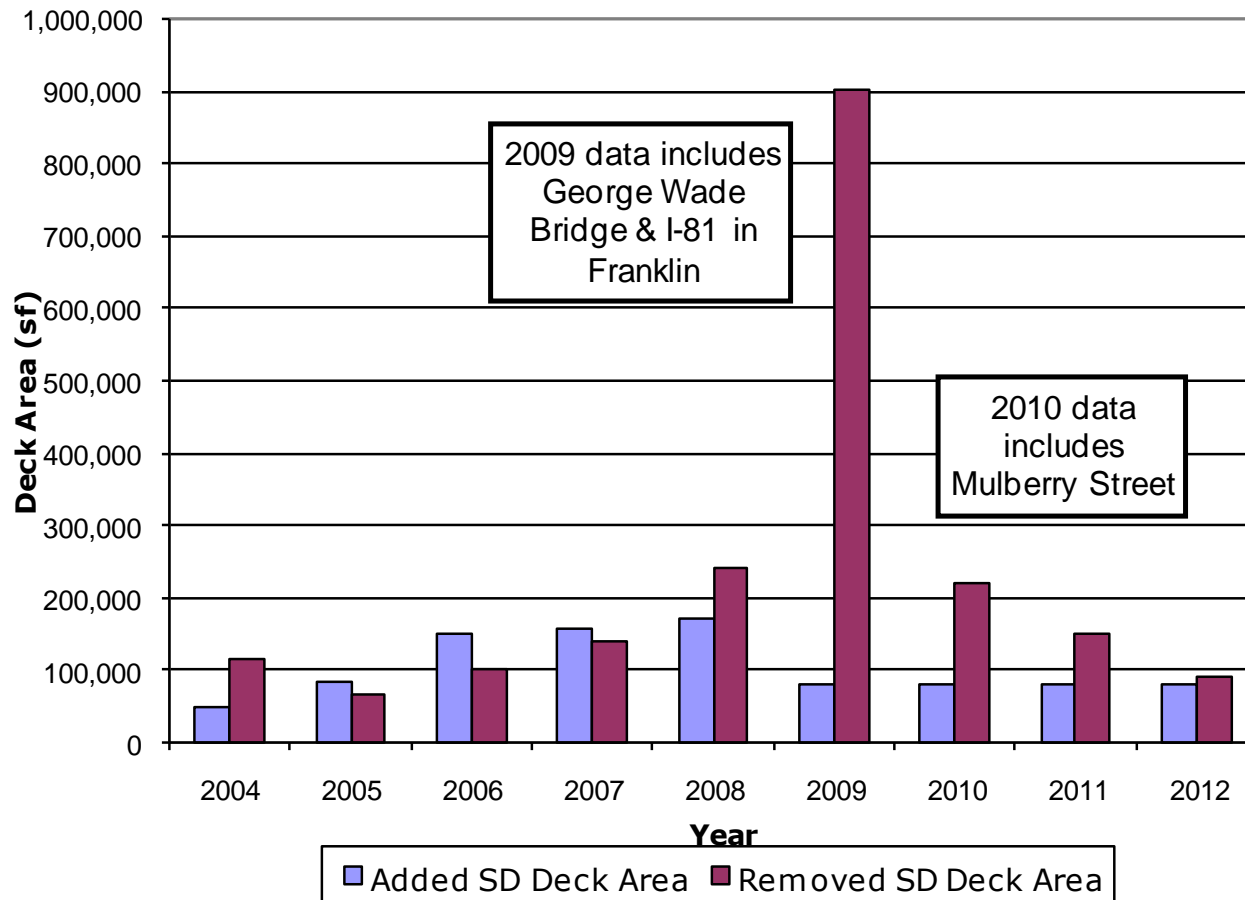
ABP Bridges

- Accelerated Bridge Program: 1145 Bridges
- District 8-0: 140 Bridges
- 2008-2009: 79 Bridges \$107.8M
- 2009-2010: 47 Bridges \$99.5M
- 2010- : 14 Bridges \$10.6M

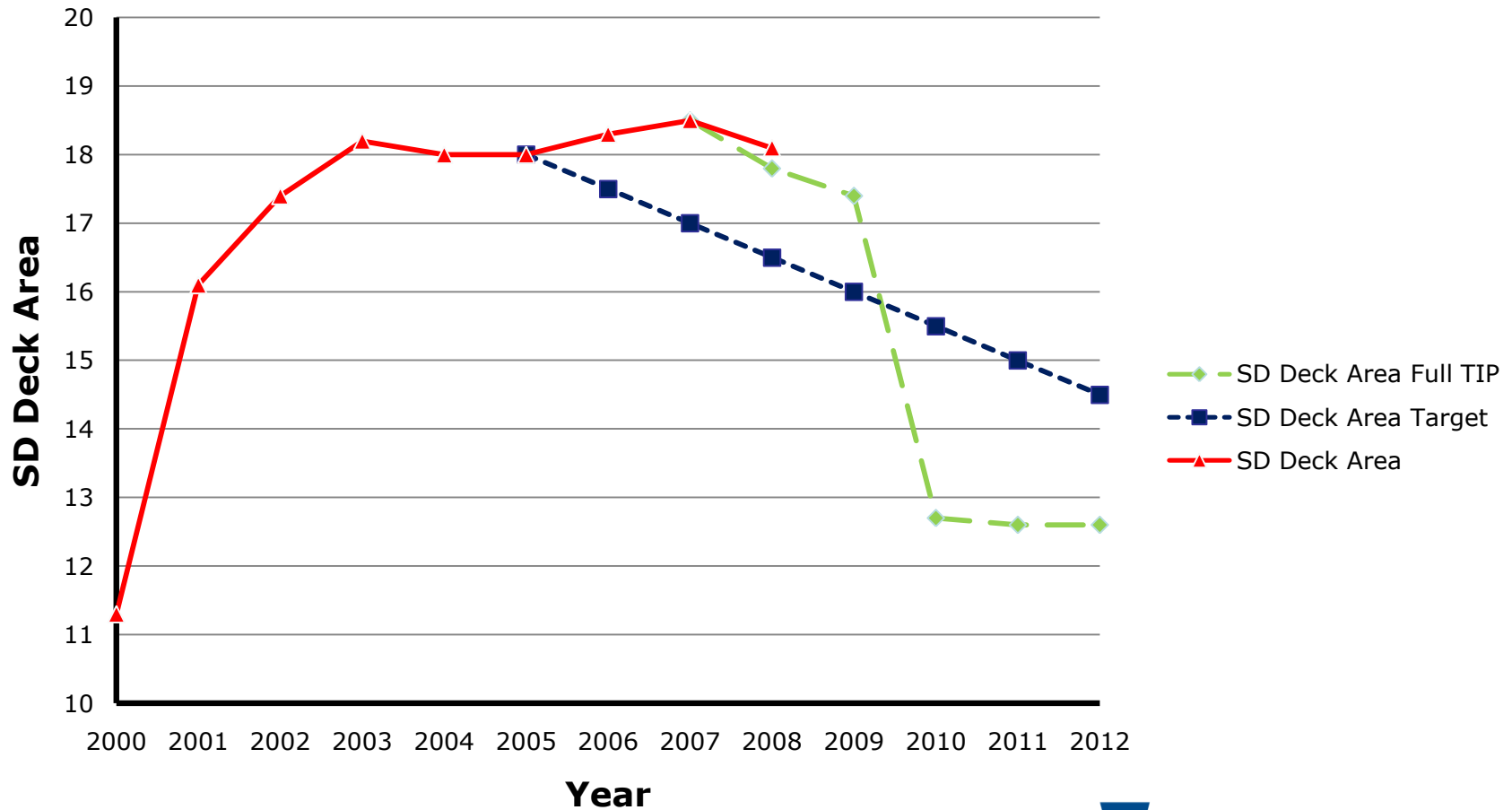
- Let Date Commitments (ABP)

- Permit/ project schedule/agency coordination

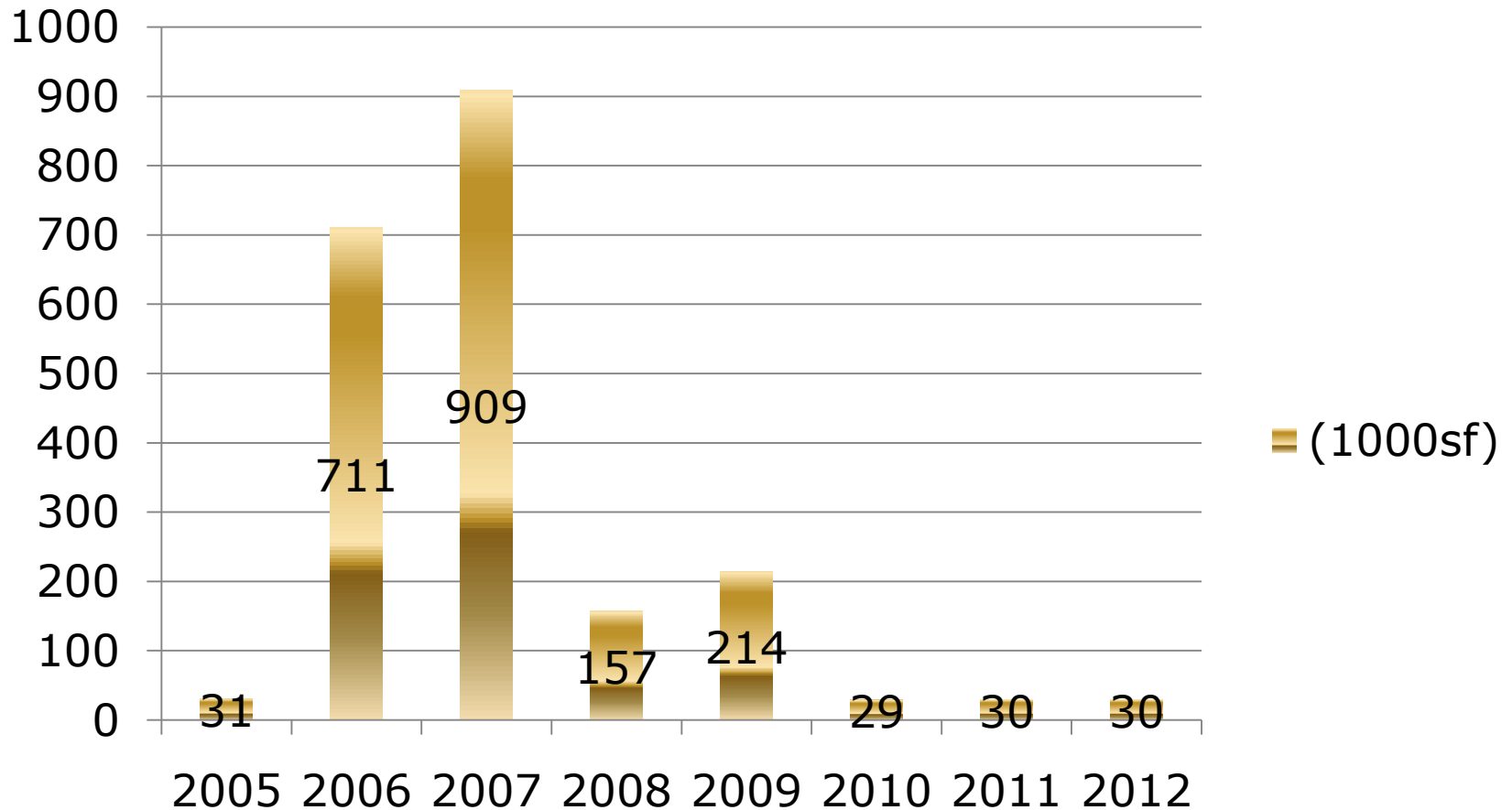
SD Deck Area Added/Removed



Structurally Deficient Deck Area Trend



Bridge Preservation



Department Force Bridge Program

- Design Division working closely with Maintenance Division.
- Fix 0 and 1 issues
- 50 box culverts for DF installation (5 years)
- Saving funds

Bridge Inspection



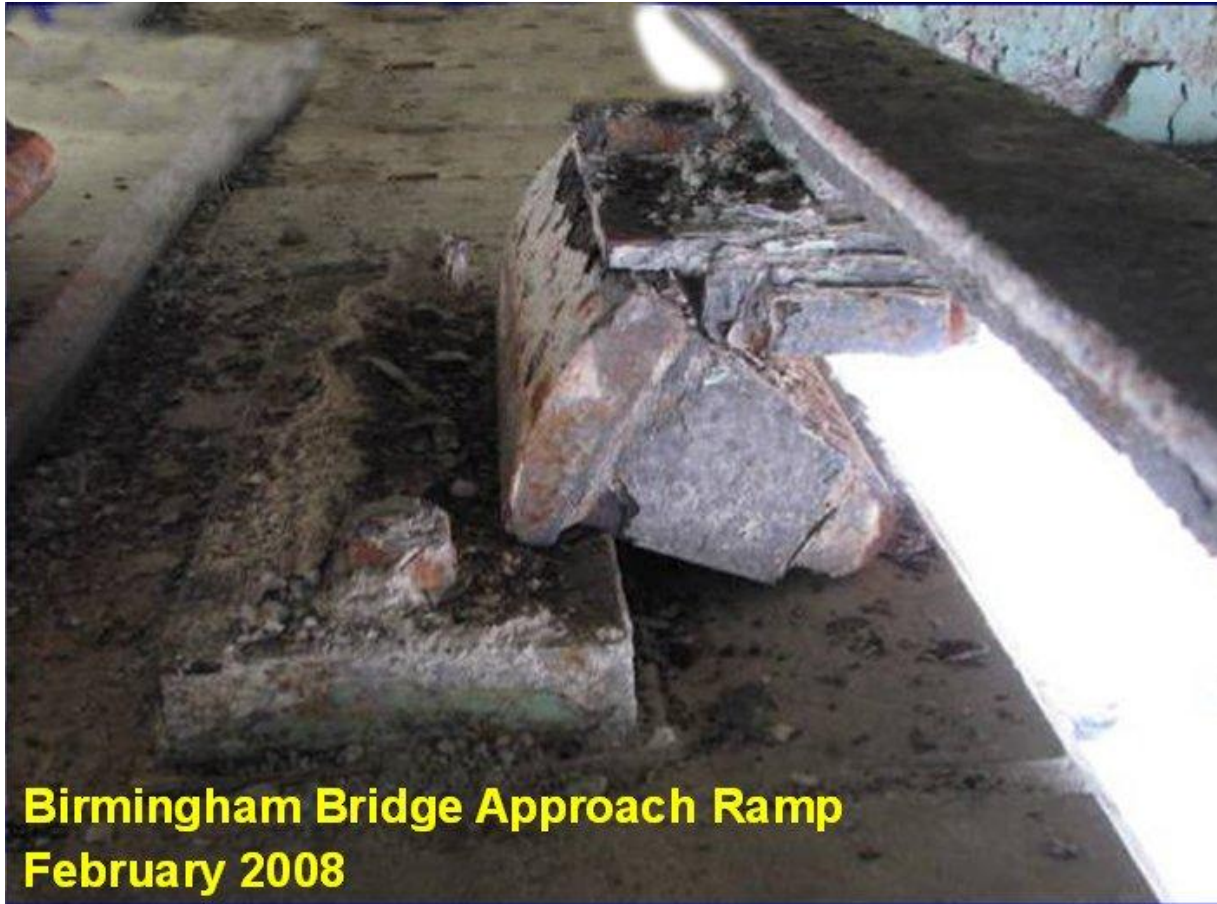
Bridge Inspection

- Two consultant teams retained
 - In-depth inspection on 160 bridges.
 - Major River bridges done
 - Staff turnover is an issue.
 - Emergencies

Special Bridge Inspections

- Rocker bearings (Strike off letter 431-08-)
- Under water (Pub. 238)
- Gusset Plate
- York County SR 4032 Truss
- QC/QA Inspections in 8-0

Rocker Bearing



**Birmingham Bridge Approach Ramp
February 2008**

I-35W Bridge



Bridge Challenges

- 10% SD goal (3rd year of 10 year goal)
- 1145 Bridges in 3 years statewide
- Pre-Cast Barriers
- Permitting processes
 - PNDI expires
 - County Conservation/DEP coordination
- Funding

Bridge Challenges

- Fix 0 and 1 issues
- Pre-Cast Barriers
- New CEE Programmatic for Rehabs and replacements (in development)

QUESTIONS

