

DISTRICT 8-0

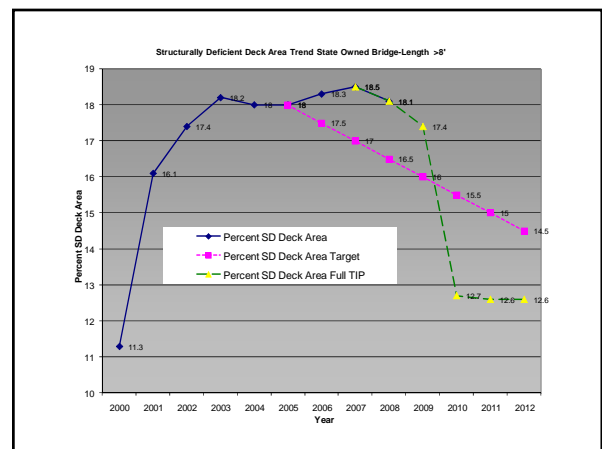
- 8 counties
 - ~1130 employees
- 6 Planning Organizations
 - Most in the state
- 5,240 Linear Roadway miles
 - Larger than 8 other states including Md
- 3,415 Bridges (> 8ft in length)
 - 11 other states

OUR FOCUS

- ▶ System Preservation - Bridges & Highways
- ▶ Smart Transportation/Project Delivery
- ▶ Safety - Fatality Reduction
- ▶ Operations Efficiency and Security
- ▶ Effectiveness and Efficiency of Maintenance Operations

- ▶ 411 Bridges
- ▶ Managing Pavement
- ▶ TMC
- ▶ Money
- ▶ Stimulus

IMPROVE BRIDGE CONDITIONS



Significantly Improve Bridge Conditions

Metrics:

- 10% in 10 yrs
- Program Enough Bridges
- \$10 million per year in preservation
- 50 box culverts with DF over 5 years

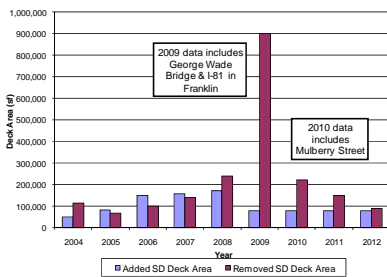
7

District 8-0 Bridge Strategy

- ▶ MPO Partnership
- ▶ Strong Department Force Program
- ▶ ON TIME Consultant Assistance
- ▶ Strong Design Build Program
- ▶ Talk to Contractors
- ▶ Track Performance and Adjust

▶

SD Deck Area Added/Removed

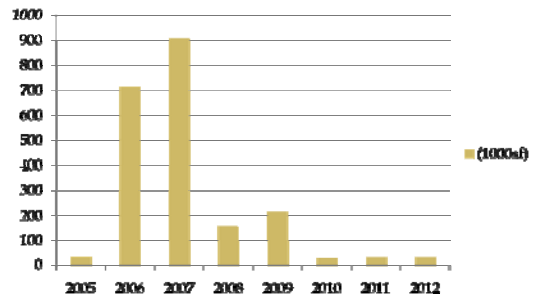


9

411
75
27 let


1145
140

Bridge Preservation



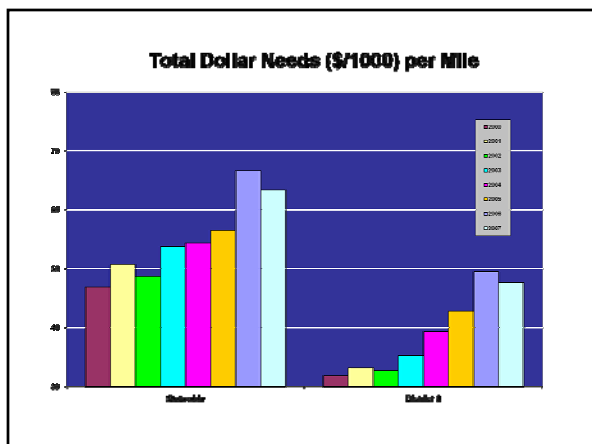
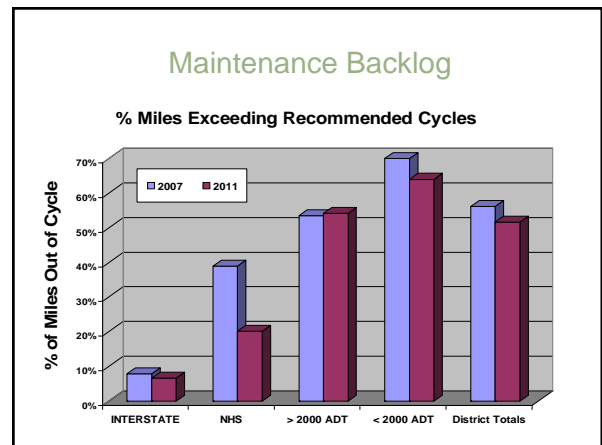
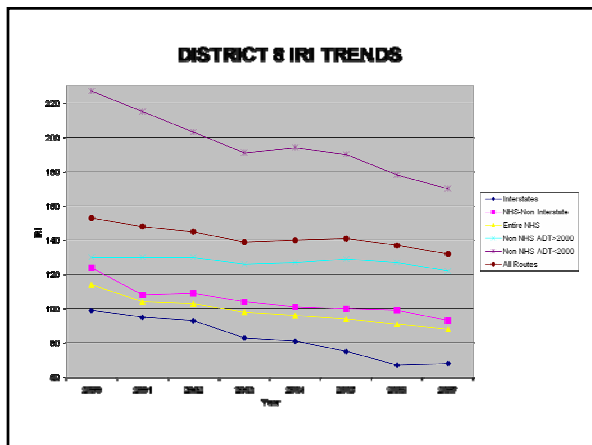
GUIDING PRINCIPLES FOR PAVEMENTS

- Asset Management Approach
- Smooth
- Well Maintained
- Utilize New Methods



Metrics

- Maintain Overall Good IRI
- Improve Maintenance Backlog
- Maintain Low STAMPP Dollar Needs
- Maximize Federal Dollars
 - \$24 million betterment
 - Act 44 Funds
 - Department Force



Systems Operations – Our ITS Vision

- ON INTERSTATES AND LOOK-A-LIKES:
 - Cameras at every interchange
 - Dynamic Messages boards every 12.5 miles
 - Highway Advisory Radio coverage
 - Traffic Management Center with 24/7/365 Operation.
 - Improve Highway Incident Management capabilities.

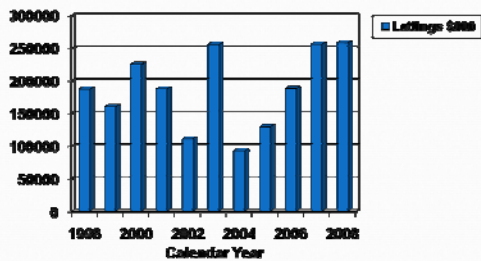
ITS Vision - Progress

- 42 CCTV INSTALLED / 104 TO GO
- 35 PERMANENT DMS INSTALLED
- 15 SEMI PERMANENT INSTALLED
– 25 NEEDED TO COMPLETE
- WE ARE 24 / 7 / 365
- DISTRICT INCIDENT RESPONSE
- CAPITAL BELTWAY PATROL

District 8-0

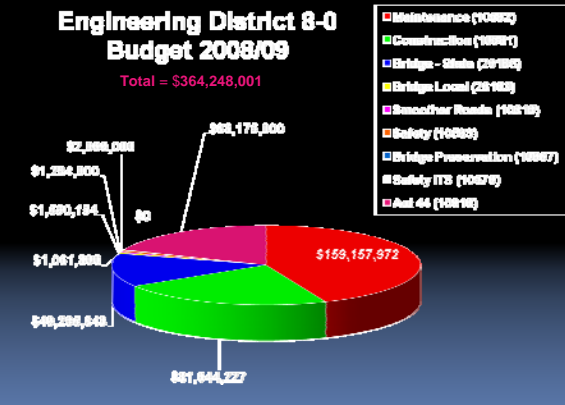
~\$350 million business

District 8 Lettings



Engineering District 8-0 Budget 2008/09

Total = \$364,248,001



STIMULUS

Our Priorities

- BRIDGES
- PAVEMENT
- SAFETY
 - Precast Barrier / Guiderail
- CAPACITY
- ITS

DISTRICT 8 MIX

- ▣ Current TIP Projects
 - Move Up Bridges
- ▣ No Fatal Flaws
- ▣ Use Open Ends
- ▣ Bridges First
- ▣ Interstate Resurfacing
- ▣ Use Design Build

SMART Transportation

- Infrastructure needs
- +
- Escalating Costs
- +
- Funding and Land Restraints
- =
- SMART Transportation is here to stay

? QUESTIONS ?