

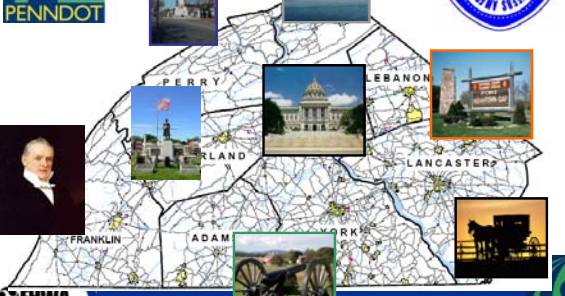





**DISTRICT 8 ASHE PRESENTATION**  
**April 1, 2008**


---

---

---

---

---




---

---

---

**Overview of Work Zone Safety and Mobility Final Rule and PennDOT Policy**  
**Updates to 23 CFR Section 630**  
**District 8-0 Approach**

*2008 ASHE Conference*


---

---

---

---

---



---

---

---

**Why Update the WZ Rule?**  
**(Legislative Requirement from Congress)**

- Growing traffic volumes and congestion
  - Vehicle travel up, but very little growth in road miles
- Our highways are approaching middle age +
  - More construction and repair is needed, which means more work zones
- More work is done under traffic
  - Compressed contractor schedules
  - Increasing night work
- Work zone safety continues to be a concern
  - Over 1,300 injuries and 20 fatalities in 2006 in PA
- Travelers are not happy with work zones
  - Unexpected road conditions and inconsistency cause traveler frustration


---

---

---

---

---

---

---

---

## Goals of the Final Rule

- Expand thinking beyond the Actual WZ
  - Corridor, Network, and Regional Issues
  - Program Size
- Expand WZ management beyond TCP
  - Address mobility in addition to safety
  - Facilitate **Customer-Focused Project Development** through comprehensive consideration of work zone impacts
  - Address current day issues with Transportation Management Plans (TMP) **“Operations and Management”** and **“Public Information”**



---

---

---

---

---

---

---

---

## Final Rule - Specific Focus Areas

- Institutionalize WZ processes, procedures, practices
- Advocate partnership, and multi-disciplinary approach
- Communicate more effectively with the public
- Advance WZ considerations throughout project delivery
- Address needs for different project types and classes
- Emphasize work zone focused training
- Emphasize performance monitoring and assessment



---

---

---

---

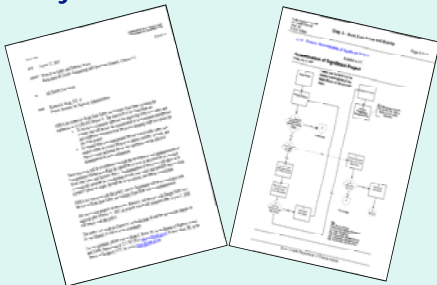
---

---

---

---

## PennDOT Work Zone Safety and Mobility Policy 8-0 Overview



---

---

---

---

---

---

---

---

## PennDOT's WZ Safety and Mobility Policy

- **Policy:** Circulated Aug 27, 2007  
Work Zone Safety and Mobility Policy (470-07-6)
  - *Traffic Engineering and Operations Manual PUB 46-Chapter 6.3*
  - *Updated October 11, 2007*
- **Scope:** Applies to Interstate, Freeway, & Principal Arterials
- **Intent:** Provide safe WZs that minimize delay for the traveling public and reduce community impacts while maintaining fiscal responsibility.



7



---

---

---

---

---

---

---

---

## PennDOT's WZ Safety and Mobility Policy

### Effective Date:

- All construction projects (Interstates, Freeways, and Principal Arterials) with DFV approval AFTER October 12, 2007 OR PS&E submitted AFTER August 1, 2008



8



---

---

---

---

---

---

---

---

## Project-Level Procedures

- Identify "Significant Projects"
- Develop Transportation Management Plans (TMP) for Significant Projects
- Include appropriate TMP provisions in the PS&E
- Implement and monitor TMP during construction phase and revise / modify strategies accordingly
- Collect performance measurement data



9



---

---

---

---

---

---

---

---

## District 8-0 Significant Projects

- Considering Interstates, Freeways and Principal Arterials this policy will not have a significant impact on our program in 8-0
- For example
  - Perry County (Rts. 11/15 and 322)
  - Franklin County (I-81, Rt.30 and limited portions of Rt. 11)
  - Adams County (Rts. 15 & 30, portions of Rts. 94 & 116)
  - York, Lancaster, Lebanon, Cumberland & Dauphin
    - Few more qualifying roadways based on Highway Classifications



10



---

---

---

---

---

---

---

---

## District 8-0 Typical Example

- SR 0030-059 Franklin County (Lincoln Way West Resurfacing)
  - Project Details: ADT – 10,028, 2% Diversion  
5% Trucks, WZ Capacity (1300<sub>veh</sub>)  
MPT-Flagging, K=10%, D=55%  
Posted 55mph, WZ 25mph
  - Results:
    - Total Hrs/Day w/Delays > 15 min. = 1.70 Hrs.
    - **Not a Significant Project**



11



---

---

---

---

---

---

---

---



## How is Project Delivery & Construction Influenced?



12



---

---

---

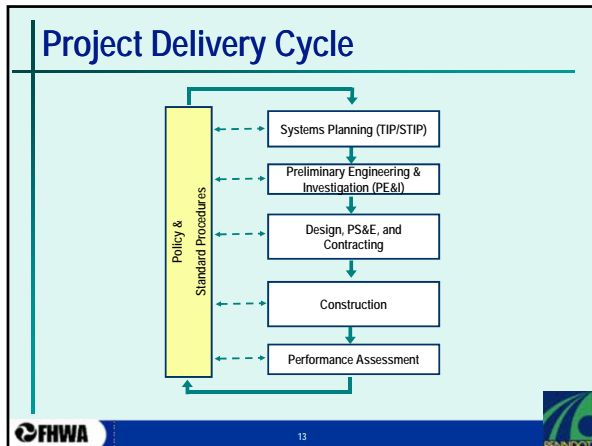
---

---

---

---

---




---

---

---

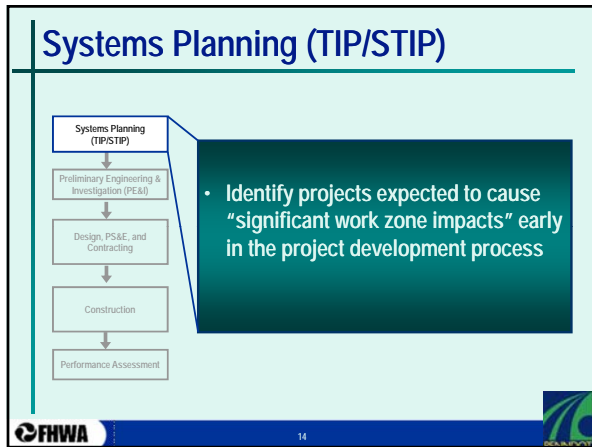
---

---

---

---

---




---

---

---

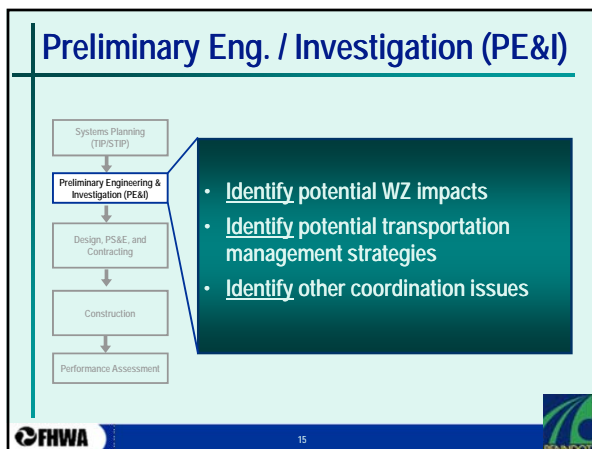
---

---

---

---

---




---

---

---

---

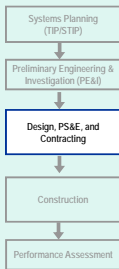
---

---

---

---

## Design, PS&E, and Contracting



- Assess WZ impacts (progressively and comprehensively)
  - Address alternative design, construction, contracting, and management strategies in the assessment
- Develop appropriate Transportation Management Plan (TMP) for “significant projects”
- Include appropriate TMP items in PS&E

---

---

---

---

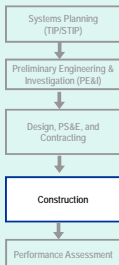
---

---

---

---

## Construction



- Implement TMP requirements
- Monitor safety and mobility
  - Use field observations, crash data, and operational information to manage impacts
- Consult with appropriate stakeholders
- Conduct Internal Audits/Reviews

---

---

---

---

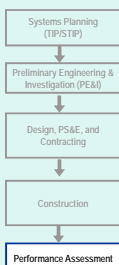
---

---

---

---

## Performance Assessment



- Analyze crash and operational data from multiple projects
  - Towards improving processes and procedures
- Maintain data and information resources to support improvements
- Conduct bi-annual process reviews
  - WZ data analysis and/or project reviews
  - Improve WZ processes and procedures, data and information resources, and training programs

---

---

---

---

---

---

---

---

## District 8-0 Approach

- District will Determine “Significant” impact
  - Internal memo will be developed to request DE concurrence
  - For Interstate Projects, we need to continue to coordinate with FHWA – open approval process
- If significant, the scope of work will include the following TMP strategies:
  - TCP (Traffic Control Plan)
  - TOP (Traffic Operations Plan)
  - PIP (Public Information Plan)



---

---

---

---

---

---

---

---

## Primary Elements of a TMP

- Introduction
- Executive Summary
- Roles and Responsibilities
- Project Description
- Traffic Conditions
- Work Zone Impact Assessment
- Work Zone Impacts Management Strategies
- TMP Performance



---

---

---

---

---

---

---

---

## Impact on Highway Engineers

- Additional traffic analysis for affected projects
  - Determine “Significant Projects”
- Develop Transportation Management Plans (TMP)
  - Transportation Operations Plan (TOP)
  - Public Information Plan (PIP)
  - Traffic Control Plan (TCP)
- Include appropriate pay items/specifications in PS&E:
  - TMP implementation
  - Collection of performance measures
- Attend Training / Use of “Best Practices”



---

---

---

---

---

---

---

---

## Impact on Contractors

- Implement Transportation Management Plan (TMP) and monitor / manage work zones
- Single point of contact for WZ traffic control:
  - Emphasis on incident management, shorter response times, active traffic management to increase safety and mobility
  - Emphasis on communication with stakeholders (public information)
- Gather / Assess WZ Performance Measures (mobility)
- Modify the TMP as required
- Train Staff



22



---

---

---

---

---

---

---

---

??? QUESTIONS ???



23



---

---

---

---

---

---

---

---