

Constructability Issues

- Temporary Stream Impacts
- Utilities
- ADA Curb Cut Ramps
- Traffic Control Plans
- Quantity Discrepancies
- E&S Plans/Permit Conditions

Temporary Stream Impacts







DEP 105/404 Permit Issues

- **REQUIREMENTS DURING CONSTRUCTION**
 - Evaluation of 2.33 year storm event
 - Water elevations for this event must remain within the stream banks
 - IF not, DEP will require the purchase of Temporary Construction Easements for effected properties

DEP 105/404 Permit Issues

- **TS&L / H&H REQUIREMENTS**
 - Evaluation must be done early in the process
 - Look at constructability Issues and construction details
 - May need to be flexible in our design approach
 - Single Span vs. Two Span

Utilities

- Safety
- Ease or flexibility during Construction
- Schedules
 - Design
 - Construction

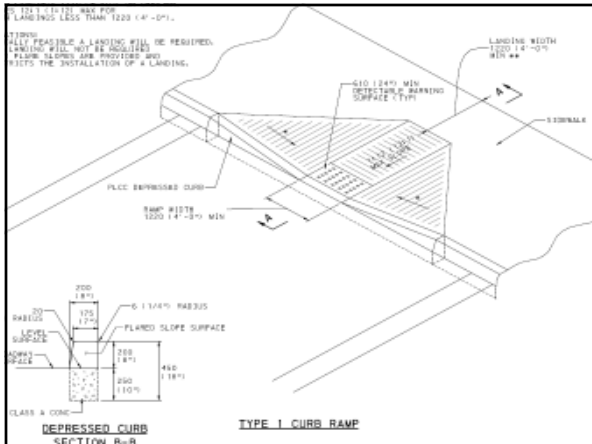






ADA Curb Cut Ramps

- Shared Responsibility
- Understand/Review Design Criteria
- Coordinate with the local municipality and document the results
- Document reasons why ADA Design Criteria cannot be met
- Consider the need for R/W, Utility Coordination and Reimbursement Agreements
- Each location may have unique challenges





Traffic Control Plans

- Temporary Lane Shifts-Shoulder Construction
 - Bridge Work and Base Repair
 - Investigate existing shoulder design
 - Take Cores to verify
 - Advance a future phase of the project
- Access within Construction Limits
 - Verify grade changes
 - Address any R/W needs

Quantity Discrepancies

- The Department is required to renegotiate prices for quantities fewer than 75%, or over 125%, of the planned quantity.
 - Line Painting
 - Re-Bar
 - Temporary Items
 - Concrete Barrier
 - Warning Lights

Constructability Issues

- E&S Plans/Permit Conditions
 - Review Precedent Setting Issues w/District
 - Consider Constructability when addressing E&S and/or DEP Comments
 - Future Cost and/or Level of Maintenance
