

NTM Engineering Presents: **BMPs for Erosion and Sediment Control Plans**



About NTM:

NTM Engineering provides professional engineering design and training services for public and private sector clients. NTM develops and instructs technical training courses on H&H, stormwater, and erosion and sedimentation control. Since 2005, NTM's staff has instructed more than 50 course offerings in various locations across PA.

The Instructors:

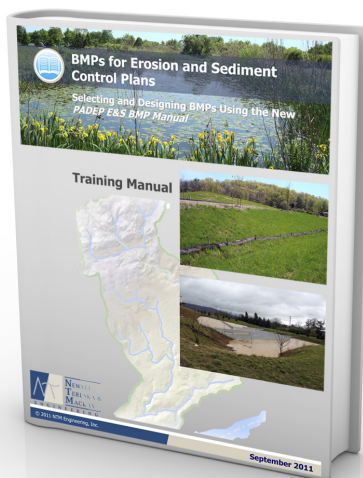
Jeffrey S. MacKay, MS, PE, CPESC

Mr. MacKay is a principal and senior engineer with NTM Engineering. He has completed E&S Control Plans over the last 10 years for various Pennsylvania highway and land development projects. He authored PennDOT's first comprehensive Stormwater Management Policy and assisted in developing PennDOT's *Drainage Manual*.

Paul A. DeBarry, MS, PE, PH, GISP, DWRE

Mr. DeBarry is NTM's Director of Watershed Studies and GIS. He has managed over 30 Act 167 stormwater management plans and been involved in various aspects of E&S Control Plans throughout his 30-year professional career. He is an adjunct lecturer at Penn State's Wilkes-Barre campus and author of the book *Watersheds: Processes, Assessment and Management*.

Selecting and Designing BMPs Using the New PA DEP Erosion & Sediment Control BMP Manual



**Sept. 13-14, 2011
8:30 a.m. - 5 p.m.**

16 PDHs, \$595.00

501 Fulling Mill Road
Middletown, PA 17057

BMPs for E&S Control Plans course topics include:

- ❖ Notable additions and changes to the new PA DEP Erosion and Sediment Control BMP Manual
- ❖ Proper selection and cost-effective design of various E&S BMPs
- ❖ Design considerations in special protection watersheds and areas adjacent to streams and wetlands

Upon successful completion of the course, an attendee will be able to:

- ❖ Identify cost-savings opportunities associated with E&S Plans
- ❖ Avoid common design errors that result in plan re-submissions
- ❖ Design various types of perimeter sediment controls
- ❖ Select and design appropriate channel lining
- ❖ Locate and design sediment basins and traps
- ❖ Properly size rock outlet protection
- ❖ Modify BMP specifications in sensitive areas

Registration Form

**Seating is limited.
Registration deadline is Sept. 2, 2011!
Pre-registration & pre-payment are required.**

Register and pay online at:
<http://www.ntmtraining.com>

OR

Mail your check of **\$595.00** payable to NTM Engineering, Inc.
along with this form to: **NTM Engineering, Inc.**
130 West Church St., Suite 200, Dillsburg, PA 17019-1232

Payments are non-refundable.
Send multiple representatives from your organization and receive a discount. Call for more information.

Questions? Contact Jen Smyers at (717) 432-4425 x117
or email: jsmyers@ntmeng.com

Name: _____
Company: _____
Address: _____
City, State, Zip: _____
Email: _____
Phone: _____



NTM Engineering is a Registered
Continuing Education Provider (RCEP)

For more information and to register online, visit: www.ntmtraining.com